

MONTHLY MEMBERSHIP PROGRESS REPORT

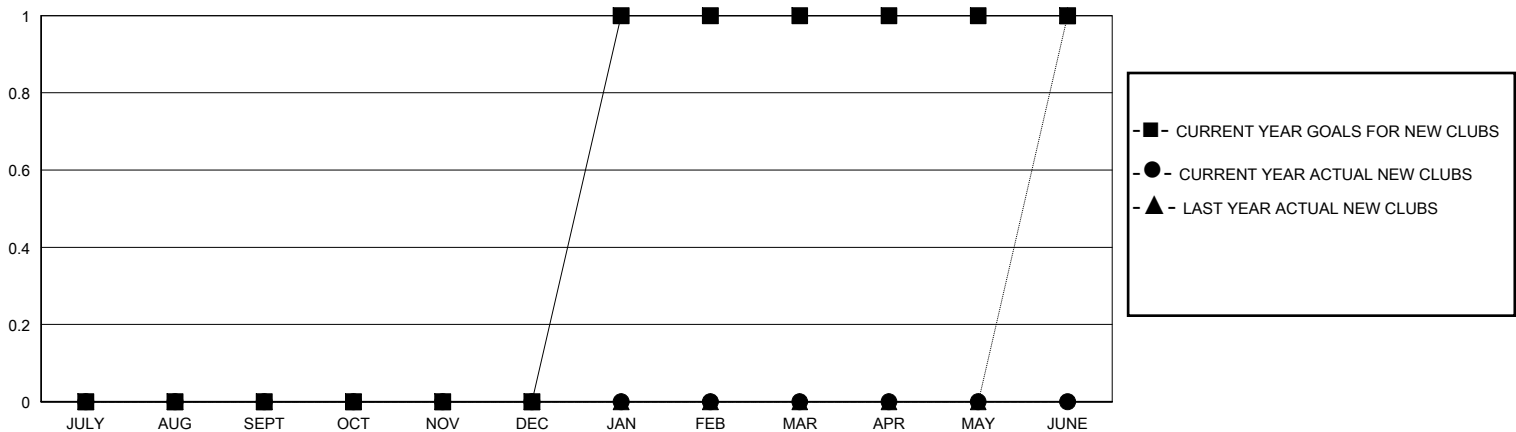
District 23 A

Results as of: 12/31/2024

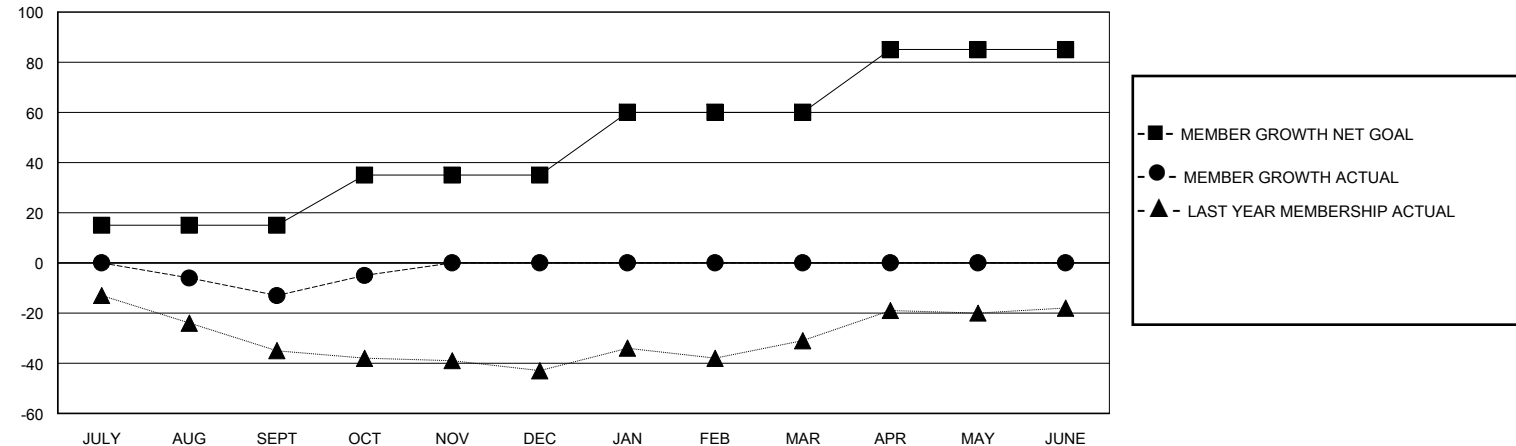
GMT: LOCATION CONNECTICUT GMT CA

Clubs				Members			
RESULTS FOR 2024-2025				RESULTS FOR 2024-2025			
QUARTER	NEW CLUB GOAL	NEW CLUBS	DROPPED CLUBS	QUARTER	MEMBER GROWTH NET GOAL	MEMBER GROWTH ACTUAL	DROPPED MEMBERS ACTUAL (including transfers)
JULY/AUG/SEPT	0	0	0	JULY/AUG/SEPT	15	20	33
OCT/NOV/DEC	0	0	0	OCT/NOV/DEC	20	43	23
JAN/FEB/MAR	1	0	0	JAN/FEB/MAR	25	0	0
APR/MAY/JUNE	0	0	0	APR/MAY/JUNE	25	0	0

GOALS AND ACTUAL NEW CLUBS CUMULATIVE



GOALS AND ACTUAL MEMBERS CUMULATIVE



DROPPED CLUBS: 0	25 CLUBS OF 47 ADDED 1 OR MORE NEW MEMBERS	<u>GENDER DISTRIBUTION</u> MALE 781 (61.74%) FEMALE 484 (38.26%)
<u>DROPPED MEMBERS</u> DECEASED 15 CLUB CANCELLED 0 OTHER 41 TOTAL 56	CLICK HERE FOR CUMULATIVE MEMBERSHIP DATA	TOTAL FAMILY UNIT MEMBERS 0 FAMILY MEMBERS PAYING HALF DUES 0